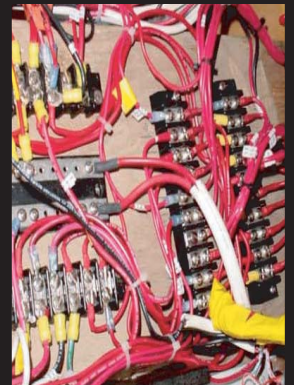


ELECTRICAL & COMMUNICATIONS PROFESSIONALS



**We keep your employees wired in.
You get to focus on your business!**

Connecting you to a WIN - WIN!

Our **i-employer.net** service provides a foundation!



The construction industry is perhaps one of the toughest industries to deal with concerning workers' compensation. Electrical contractors and sub-contractors face serious issues when not in compliance with the workers' comp laws. The stiff guidelines that carriers are insisting upon make it very difficult to secure good workers' comp coverage on your own.

Issues like employee turnover, sole proprietors with one or two employees, missed payrolls due to weather, height exposure are all issues that are difficult to deal with when you're trying to secure workers' comp and payroll services.

From leasing services (payroll with workers' compensation) to benefits packages including health, life, dental, vision, disability, employee

assistance programs, and retirement plans, we have the answer.

I-Employer.net services partners with many regional and national providers to offer a wide range of services at very competitive rates. We have solutions for contractors of every size. From 2 to 2000 employees.

Our clients tell us it is frustrating and time consuming for construction industry owners to find the best solution for their company. The burden of workers' compensation, payroll processing and human resource issues take valuable time out of your day when the need to be focusing on your core business operations is more critical to success than ever. That's where I-Employer.net service can help.

We know that your time is valuable. Our many qualified provider partners allow us to find flexible coverage solutions for the electrical contractors. Our I-Employer.net service has shopped the market for the construction industry and found not only viable solutions for employers, but solutions that are attractive to your business.

Through our network of brokers we are available for direct appointments or we can gather your information for a quote online, by fax, email or phone so we don't impose on your time. After we've received all required information, it should take approximately 3 days to provide you with a competitive quote. Find out what many others already know .

HELP IS JUST A CLICK, CALL or FAX AWAY!

TO GET STARTED TODAY YOU CAN CONTACT US:

ONLINE: www.i-employer.net Download, complete and fax our easy to use REQUEST FOR PROPOSAL.

EMAIL: info@i-employer.net

PHONE: 352-382-1776

TOLL FREE: 866-626-4333

FAX: 352-382-0909

i-employer.net is a service of **i-group, inc.**
Where Business and Opportunity Meet

↗ What can we provide?

Our I-Employer.net service is focused on finding the best leasing partner for your specific needs. Instead of have one leasing partner we have a many qualified PEO's. Each PEO has an employer groups they service best. We know which PEO will provide your company with the best service options.

↗ What is the PEO advantage?

- Reduce cost and concentrate on your core business
- Workers' compensation coverage
- Attract and retain employees with competitive benefits
- Reduce payroll issues
- Calculate/process payroll
- Provide direct deposit
- Reduce state and federal labor requirement burdens
- Reduce your employee administrative work
- Advice on labor and safety compliance guides
- Prepare federal and state payroll reports
- Remit payroll taxes / related tax filings
- Prepare W2s
- Track vacation / sick time
- Reduce liability on wage and tax laws
- Reduce state and federal compliance issues
- Reduce the hassle of Workers' Compensations
- Reduce the hassle of Unemployment claims
- Human resources and benefit management

↗ What services are available?

- Leasing services (payroll with workers' comp coverage)
- Health Insurance (major and mini med programs)
- Dental Insurance
- Vision Insurance and discount programs
- Disability Policies
- Long Term Care
- Retirement Plans
- Life Insurance
- Employee Assistance programs
- Section 125 plans (Cafeteria Plans or Pre-Tax Programs)
- Executive Compensation Programs
- Key Person Insurance
- Voluntary Programs